

Customization Stainless Steel Machine Tool Armored Bellows Cover Telescopic Steel Way Covers

Our Product Introduction

Basic Information

- Place of Origin: China
- Brand Name: BNEE
- Certification: ISO9000 CE
- Model Number: Customised as per drawing
- Minimum Order Quantity: 1
- Price: 20\$-60\$
- Packaging Details: cardboard box
- Delivery Time: 5-8work days
- Payment Terms: T/T
- Supply Ability: 100 pieces per week



Product Specification

- Materials: PVC
- Colour: Black
- Height: Customisation
- Width: Customisation
- Maximum Stretch: Customisation
- Minimum Compression: Customisation
- Highlight: **stainless steel bellows cover,
stainless steel cover telescopic,
machine tool bellows cover**

Product Description

Guide Rail Protective Covers: Ensuring Precision and Durability in Linear Motion Systems

Introduction: Guide rail protective covers are specialized components designed to protect the guide rails of linear motion systems from various environmental factors that could affect the performance and longevity of the machinery. These covers are crucial in maintaining the precision and reliability of industrial equipment.

Purposes of Guide Rail Protective Covers: Guide rail protective covers serve several important purposes:

Prevent Wear and Tear: They protect the guide rails from physical damage caused by debris, dust, and other particles that can lead to wear and tear.

Reduce Friction: By minimizing contact between the guide rails and contaminants, protective covers help to reduce friction, which can contribute to smoother operation.

Enhance Accuracy: By maintaining the integrity of the guide rails, these covers help to ensure the accuracy of the linear motion systems.

Prolong Equipment Life: By shielding the guide rails from potential damage, protective covers can extend the service life of the machinery.

Improve Safety: They prevent accidental contact with moving parts, thus reducing the risk of injury.

Classification of Guide Rail Protective Covers: Guide rail protective covers can be classified based on material, design, and level of protection:

Material Classification:

Steel Covers: Durable and strong, suitable for heavy-duty applications and environments where high resistance to impact is required.

Aluminum Covers: Lightweight and corrosion-resistant, often used for their balance of strength and low weight.

Plastic or Polymer Covers: Offer good resistance to chemicals and are typically used in lighter-duty applications.

Design Classification:

Fixed Covers: Permanently attached to the guide rail system, providing constant protection.

Adjustable Covers: Designed to fit a range of guide rail sizes and can be adjusted for a precise fit.

Retractable Covers: Can be moved or rolled out of the way for maintenance or when access to the guide rails is needed.

Level of Protection Classification:

Standard Duty Covers: Provide basic protection against dust and light debris.

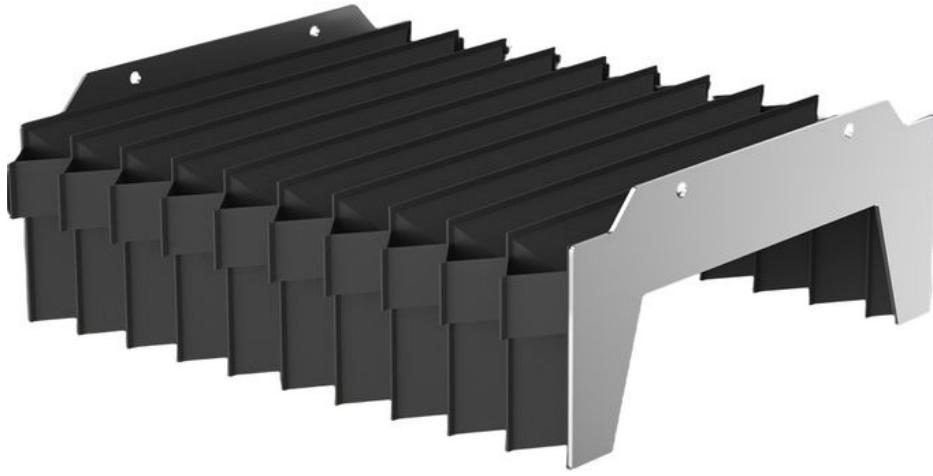
Heavy Duty Covers: Designed for harsh environments and offer enhanced protection against large debris and impacts.

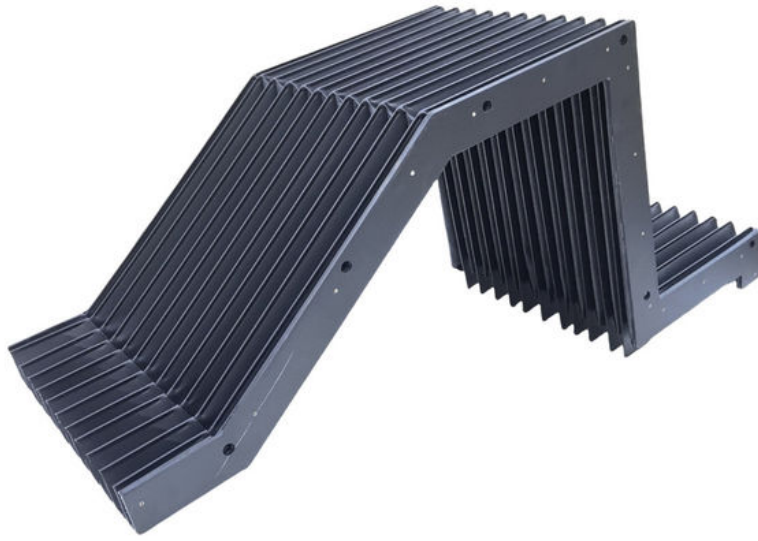
Sealed Covers: Provide a complete seal against environmental factors, including water, dust, and chemicals.

Conclusion: Guide rail protective covers are a vital component in the maintenance of linear motion systems, offering a range of benefits from enhanced precision to improved safety. With a variety of classifications available, these covers can be tailored to meet the specific needs of different industrial applications. As technology advances and industrial machinery becomes more sophisticated, the role of guide rail protective covers in ensuring optimal performance and equipment longevity will continue to be essential.

Lmax /Lmin/H	10	15	20	25	30	35	40	45	50	55
100	53	39	34	32	30	28	27	26	26	25
150	69	49	41	38	34	32	30	29	28	27
200	85	58	47	43	39	36	34	32	31	30
250	102	68	54	49	43	39	37	35	33	32
300	118	77	61	55	48	43	40	38	36	34
350	134	87	67	60	52	47	43	40	38	36
400	150	96	74	66	57	51	46	43	41	39
450	166	106	81	72	61	55	50	46	43	41
500	183	115	87	77	66	58	53	49	46	43







BNEE[®] Hebei Zhuolian Machine Tool Accessories Co., Ltd.



+8613463173251



BNEE@hebeizhuolian.com



flexiblecablecarrier.com

Cangdong Economic Development Zone, Cangzhou City, Hebei Province