

## Welding Machine Cast Iron Light Plate Bellow Cover Shields Sporting Goods

### Our Product Introduction

#### Basic Information

- Place of Origin: China
- Brand Name: BNEE
- Certification: ISO9000 CE
- Model Number: Customised as per drawing
- Minimum Order Quantity: 1
- Price: 20\$-60\$
- Packaging Details: cardboard box
- Delivery Time: 5-8work days
- Payment Terms: T/T
- Supply Ability: 100 pieces per week



#### Product Specification

- Materials: PVC
- Colour: Black
- Height: Customisation
- Width: Customisation
- Maximum Stretch: Customisation
- Minimum Compression: Customisation
- Highlight: welding machine telescopic cover,  
welding machine telescopic covers,  
cast iron telescopic cover

## Product Description

### Armor-Plated Protective Covers: The Industrial Shield for Heavy-Duty Applications

**Introduction:** Armor-plated protective covers represent the frontline of defense for machinery in the most demanding industrial environments. These robust covers are designed to provide unparalleled protection against physical impacts, heavy debris, and harsh operating conditions.

**Purposes of Armor-Plated Protective Covers:** The primary purposes of armor-plated protective covers are to:

**Withstand High Impacts:** Protect machinery from the rigors of heavy industrial use, including impacts from large debris and accidental collisions.

**Resist Abrasion:** Shield components from wear and tear caused by continuous operation in abrasive conditions.

**Prevent Contamination:** Keep out dust, dirt, and other contaminants that could affect the performance and lifespan of machinery.

**Enhance Safety:** Reduce the risk of accidents by covering moving parts and sharp edges, minimizing the potential for injury.

**Maintain Equipment Integrity:** Preserve the structural integrity of machinery against the challenges of heavy-duty use.

**Application Forms of Armor-Plated Protective Covers:** Armor-plated protective covers are available in various forms to suit different machinery and operational requirements:

**Fixed Panel Covers:** Rigid covers that provide a permanent shield for machinery components, ideal for static or infrequently accessed areas.

**Modular Covers:** Designed in interlocking sections for easy installation and replacement, accommodating a variety of machinery sizes and shapes.

**Hinged or Folding Covers:** Allowing access to machinery for maintenance while still offering robust protection when closed.

**Adjustable Covers:** Capable of being resized or reconfigured to fit specific machinery dimensions or to adapt to changes in equipment setup.

**Retractable Covers:** Designed to be moved out of the way when access is needed, providing flexibility in applications where regular interaction with the machinery is required.

**Uses of Armor-Plated Protective Covers:** The uses of armor-plated protective covers span across industries where heavy-duty protection is essential:

**Mining and Construction:** Protect heavy machinery operating in environments with large rocks, dust, and debris.

**Metalworking and Fabrication:** Shield equipment from sparks, hot metal splashes, and heavy workloads.

**Automotive Manufacturing:** Provide durable protection for machinery in assembly lines and press shops.

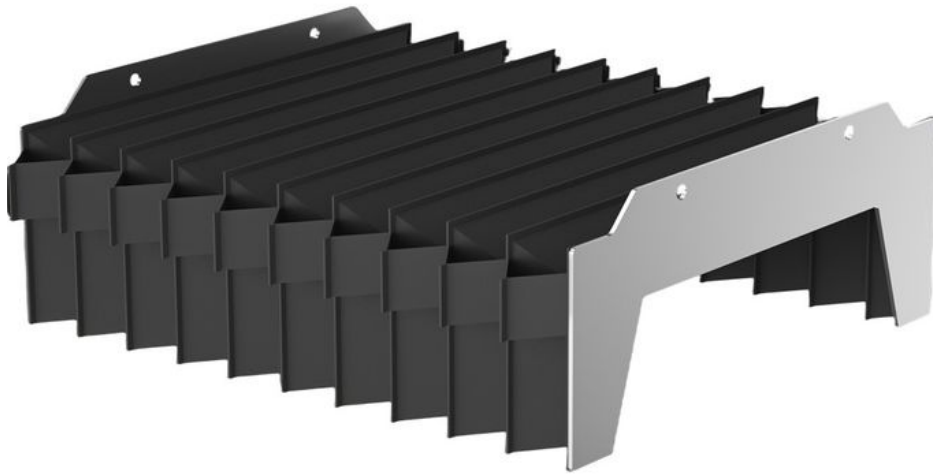
**Agricultural Machinery:** Ensure long-term performance of equipment exposed to outdoor elements and rough terrain.

**Marine and Offshore Applications:** Withstand the corrosive and wet conditions of maritime operations.

**Conclusion:** Armor-plated protective covers are the choice of industries that require the highest standards of machinery protection. Their diverse application forms and steadfast commitment to safeguarding equipment from the toughest conditions make them indispensable in heavy-duty environments. As industrial operations continue to push the boundaries of performance and durability, the role of armor-plated protective covers will remain a critical component in the preservation and safety of valuable machinery.

Lmax /Lmin/H	10	15	20	25	30	35	40	45	50	55
100	53	39	34	32	30	28	27	26	26	25
150	69	49	41	38	34	32	30	29	28	27
200	85	58	47	43	39	36	34	32	31	30
250	102	68	54	49	43	39	37	35	33	32
300	118	77	61	55	48	43	40	38	36	34
350	134	87	67	60	52	47	43	40	38	36
400	150	96	74	66	57	51	46	43	41	39
450	166	106	81	72	61	55	50	46	43	41
500	183	115	87	77	66	58	53	49	46	43





**BNEE**® Hebei Zhuolian Machine Tool Accessories Co., Ltd.

+8613463173251

BNEE@hebeizhuolian.com

flexiblecablecarrier.com

