



Nylon Dust Cover Telescopic CNC Machine Protection Bellows Cover

Our Product Introduction

Basic Information

- Place of Origin: China
- Brand Name: BNEE
- Certification: ISO9000 CE
- Model Number: Customised as per drawing
- Minimum Order Quantity: 1
- Price: 20\$-60\$
- Packaging Details: cardboard box
- Delivery Time: 5-8work days
- Payment Terms: T/T
- Supply Ability: 100 pieces per week



Product Specification

- Materials: PVC
- Colour: Black
- Height: Customisation
- Width: Customisation
- Maximum Stretch: Customisation
- Minimum Compression: Customisation
- Highlight: **Protection Bellows Cover,
Nylon Dust telescopic bellows cover,
Nylon Dust cnc bellow cover**



Product Description

Nylon Dust Cover Telescopic CNC Machine Protection Bellows Cover

Accordion-Style Protective Covers: Versatile and Adaptive Solutions for Industrial Applications

Introduction: Accordion-style protective covers, known for their pleated design, offer a flexible and reliable means of protecting machinery components in a variety of industrial settings. These covers are designed to provide a protective barrier while accommodating the movement of the machinery they shield.

Classification of Accordion-Style Protective Covers: Accordion-style protective covers can be classified according to their material, design, and the level of protection they offer:

Material Classification:

Polyurethane Covers: Known for their durability and resistance to wear and tear.

Rubber Covers: Provide excellent resistance to water, oils, and chemicals.

Plastic or Nylon Covers: Lightweight and resistant to corrosion, suitable for less demanding environments.

Design Classification:

Single-Wall Covers: Provide basic protection and are typically used for dust and light debris.

Double-Wall Covers: Offer enhanced protection with an inner and outer wall for added strength and durability.

Protection Level Classification:

Standard Duty Covers: Suitable for general use and provide basic protection against environmental factors.

Heavy Duty Covers: Designed for harsh conditions and offer superior resistance to abrasion, heat, and impact.

Uses of Accordion-Style Protective Covers: The uses of accordion-style protective covers are extensive and tailored to specific industrial needs:

Machine Tooling: Protecting guide rails, balls screws, and other components of CNC machines, mills, and lathes from chips, coolant, and debris.

Automotive Manufacturing: Used in assembly lines to protect cables and hoses on robotic arms and automated equipment from wear and environmental damage.

Medical Equipment: Ensuring cleanliness and safety by protecting sensitive components of medical devices from dust and other contaminants.

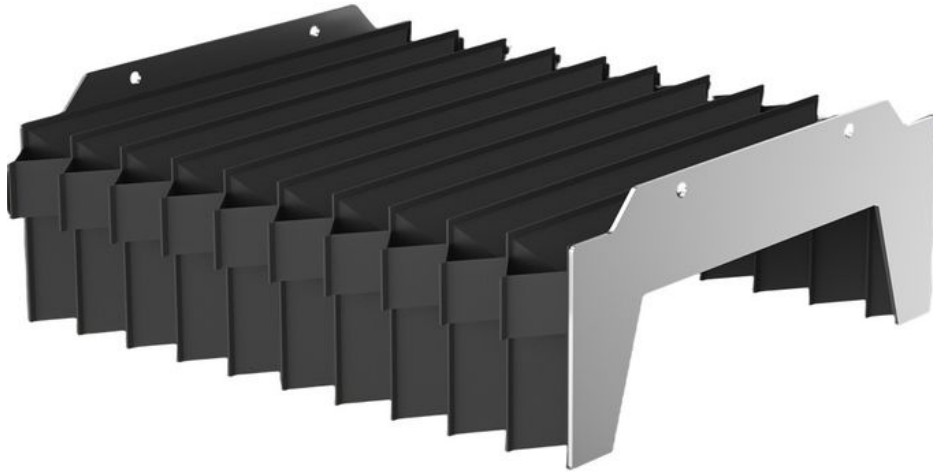
Material Handling Systems: Shielding moving parts of conveyor belts and sortation systems in logistics and warehousing from potential damage.

Aerospace and Defense: Withstanding the rigors of these industries by protecting equipment from harsh conditions and ensuring reliable operation.

Conclusion: Accordion-style protective covers are a testament to the adaptability required in modern industrial applications. Their diverse classification allows them to cater to a wide range of protective needs, from basic dust protection to heavy-duty applications in harsh environments. As industries continue to demand higher levels of equipment protection and operational efficiency, the role of accordion-style protective covers as a versatile and reliable solution will remain indispensable.

Lmax /Lmin/H	10	15	20	25	30	35	40	45	50	55
100	53	39	34	32	30	28	27	26	26	25
150	69	49	41	38	34	32	30	29	28	27
200	85	58	47	43	39	36	34	32	31	30
250	102	68	54	49	43	39	37	35	33	32
300	118	77	61	55	48	43	40	38	36	34
350	134	87	67	60	52	47	43	40	38	36
400	150	96	74	66	57	51	46	43	41	39
450	166	106	81	72	61	55	50	46	43	41
500	183	115	87	77	66	58	53	49	46	43







BNEE[®] Hebei Zhuolian Machine Tool Accessories Co., Ltd.



+8613463173251



BNEE@hebeizhuolian.com



flexiblecablecarrier.com

Cangdong Economic Development Zone, Cangzhou City, Hebei Province