

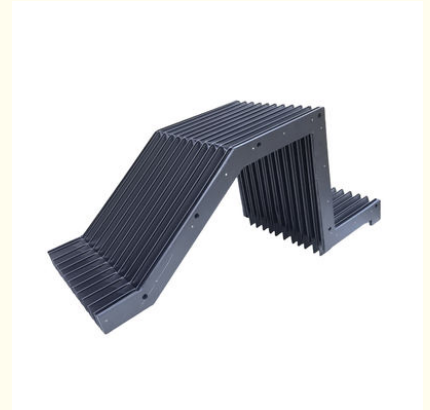


Machine Shield Armour Guard Guide Way Bellows Cover / CNC Machine Bellows Covers

Our Product Introduction

Basic Information

- Place of Origin: China
- Brand Name: BNEE
- Certification: ISO9000 CE
- Model Number: Customised as per drawing
- Minimum Order Quantity: 1
- Price: 20\$-60\$
- Packaging Details: cardboard box
- Delivery Time: 5-8work days
- Payment Terms: T/T
- Supply Ability: 100 pieces per week



Product Specification

- Materials: PVC
- Colour: Black
- Height: Customisation
- Width: Customisation
- Maximum Stretch: Customisation
- Minimum Compression: Customisation
- Highlight: **armour bellows way covers,
armour machine bellows covers,
guard guide bellows way covers**

Product Description

CNC Machine Shield Armour Guard Guide Way Bellows Cover

Protective Covers: Classification, Performance, and Applications

Introduction: Protective covers are essential in various industries to ensure the safety, reliability, and longevity of machinery and equipment. These covers are designed to shield components from environmental factors, physical impacts, and unauthorized access. Let's delve into the different classifications, performance characteristics, and applications of protective covers.

Classification of Protective Covers: Protective covers can be categorized based on material, design, and functionality:

Material-Based Classification:

Metal Covers: Durable and strong, often used in heavy-duty applications.

Plastic Covers: Lightweight and corrosion-resistant, suitable for lighter applications.

Fabric Covers: Flexible and easy to install, often used for temporary protection.

Design-Based Classification:

Fixed Covers: Permanently attached to provide constant protection.

Removable Covers: Designed for easy installation and removal for maintenance.

Adjustable Covers: Adaptable to fit various sizes and shapes of machinery.

Function-Based Classification:

Dust and Debris Covers: Protect against dust accumulation and small particles.

Water and Moisture Covers: Designed to prevent water ingress and moisture damage.

Impact Protection Covers: Offer additional strength to resist impacts and shocks.

Performance Characteristics: The performance of protective covers is defined by several key attributes:

Durability: The ability to withstand wear and tear in the intended environment.

Resistance: To various elements such as dust, water, chemicals, and temperature extremes.

Flexibility: For covers that need to move with the machinery without compromising protection.

Transparency: For plastic covers that allow visual inspection of the protected components.

Ease of Maintenance: Features that facilitate easy cleaning and upkeep of the covers.

Applications of Protective Covers: Protective covers are used in a wide array of applications to safeguard equipment:

Industrial Machinery: To protect the moving parts of machines from damage and contamination.

Electronics Enclosures: To shield sensitive electronic components from environmental hazards.

Medical Equipment: To ensure cleanliness and protect delicate medical instruments from dust and moisture.

Automotive and Transportation: For protecting vehicles' components from debris and harsh weather conditions.

Construction and Mining: To safeguard heavy machinery operating in rugged outdoor environments.

Conclusion: Protective covers serve a vital role in a multitude of industries, providing a protective layer that enhances the functionality and lifespan of machinery and equipment. Their diverse classification allows for tailored solutions to specific protection needs, while their performance characteristics ensure reliable and long-lasting use. As technology and industrial processes continue to evolve, the importance of protective covers in safeguarding valuable assets will remain a priority.

Lmax /Lmin/H	10	15	20	25	30	35	40	45	50	55
100	53	39	34	32	30	28	27	26	26	25
150	69	49	41	38	34	32	30	29	28	27
200	85	58	47	43	39	36	34	32	31	30
250	102	68	54	49	43	39	37	35	33	32
300	118	77	61	55	48	43	40	38	36	34
350	134	87	67	60	52	47	43	40	38	36
400	150	96	74	66	57	51	46	43	41	39
450	166	106	81	72	61	55	50	46	43	41
500	183	115	87	77	66	58	53	49	46	43









BNEE[®] Hebei Zhuolian Machine Tool Accessories Co., Ltd.



+8613463173251



BNEE@hebeizhuolian.com



flexiblecablecarrier.com

Cangdong Economic Development Zone, Cangzhou City, Hebei Province