



## Fireproof Bellow Dust Cover CNC Flexible Accordion Fabric Cover Laser Bellows Cover

### Our Product Introduction

#### Basic Information

- Place of Origin: China
- Brand Name: BNEE
- Certification: ISO9000 CE
- Model Number: Customised as per drawing
- Minimum Order Quantity: 1
- Price: 20\$-60\$
- Packaging Details: cardboard box
- Delivery Time: 5-8work days
- Payment Terms: T/T
- Supply Ability: 100 pieces per week



#### Product Specification

- Materials: PVC
- Colour: Black
- Height: Customisation
- Width: Customisation
- Maximum Stretch: Customisation
- Minimum Compression: Customisation
- Highlight: **Accordion bellow dust cover ,  
Flexible bellow dust cover ,  
Fireproof bellow dust cover**

## Product Description

Fireproof Bellows CNC Flexible Accordion Fabric Cover Laser Bellows Cover

### Machine Tool Guide Rail Flexible Protective Covers: Advanced Protection for Precision Machinery

**Introduction:** Machine tool guide rail flexible protective covers are critical components designed to protect the precision guide rails of various industrial machines. These covers are engineered to shield the guide rails from debris, coolants, and other potential sources of damage that can affect the machine's operational accuracy and longevity.

**Performance of Guide Rail Protective Covers:** The performance characteristics of guide rail protective covers are paramount in ensuring the protection and efficiency of machine tools:

**Durability:** Made from high-quality materials such as steel, aluminum, or reinforced plastics, these covers are built to last in tough industrial environments.

**Flexibility:** The flexible design allows for movement alongside the guide rails without compromising the cover's protective integrity.

**Sealing Properties:** Effective seals prevent the ingress of dust, chips, and coolant, keeping the guide rails clean and well-maintained.

**Temperature Resistance:** Designed to withstand a range of temperatures, suitable for both hot and cold working conditions.

**Chemical Resistance:** Certain materials used in protective covers resist corrosion from chemicals and coolants commonly used in machining processes.

**Uses of Guide Rail Protective Covers:** Guide rail protective covers are utilized in a variety of industrial applications where machine tools are employed:

**CNC Machines:** To protect the guide rails of computer numerical control machines from wear and tear.

**Milling and Drilling Machines:** For safeguarding the precision rails that guide the machine's cutting tools.

**Lathe Machines:** To ensure the accuracy of the turning process by protecting the guide ways from debris.

**Grinding Machines:** Protecting the guide rails that support the grinding wheel and workpiece.

**Automated Assembly Lines:** For maintaining the accuracy of automated machinery and robotic arms.

**Classification of Guide Rail Protective Covers:** Guide rail protective covers can be classified based on several criteria:

**Material Classification:** Different materials such as steel for heavy-duty applications, plastic for lighter applications, and special composites for high-temperature environments.

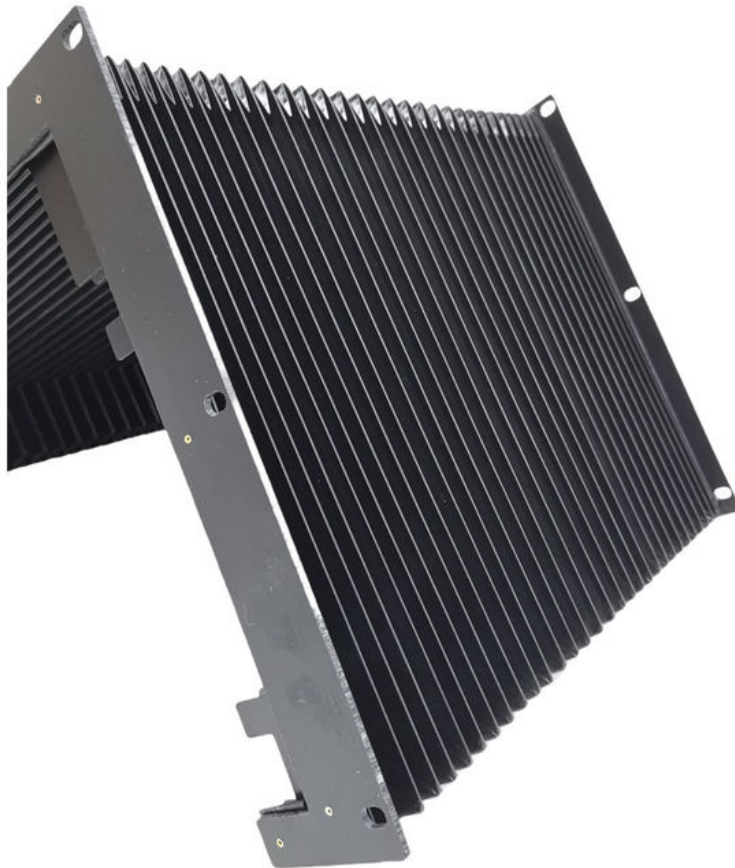
**Design Classification:** Open designs for easy installation and maintenance, closed designs for maximum protection, and modular designs for customizable solutions.

**Application Classification:** Specific types of protective covers are designed for linear motion systems, circular guide ways, and complex contoured guide rails.

**Movement Classification:** Fixed covers for static protection and flexible covers for dynamic systems where movement is required.

**Conclusion:** Machine tool guide rail flexible protective covers play a vital role in maintaining the performance and extending the life of industrial machinery. Their ability to provide durable, flexible, and chemical-resistant protection makes them an essential investment for any workshop or factory. As the manufacturing industry continues to advance, the demand for high-quality protective covers that ensure precision and reliability will remain significant.

Lmax /Lmin/H	10	15	20	25	30	35	40	45	50	55
100	53	39	34	32	30	28	27	26	26	25
150	69	49	41	38	34	32	30	29	28	27
200	85	58	47	43	39	36	34	32	31	30
250	102	68	54	49	43	39	37	35	33	32
300	118	77	61	55	48	43	40	38	36	34
350	134	87	67	60	52	47	43	40	38	36
400	150	96	74	66	57	51	46	43	41	39
450	166	106	81	72	61	55	50	46	43	41
500	183	115	87	77	66	58	53	49	46	43







**BNEE<sup>®</sup>** Hebei Zhuolian Machine Tool Accessories Co., Ltd.



+8613463173251



BNEE@hebeizhuolian.com



flexiblecablecarrier.com

Cangdong Economic Development Zone, Cangzhou City, Hebei Province