

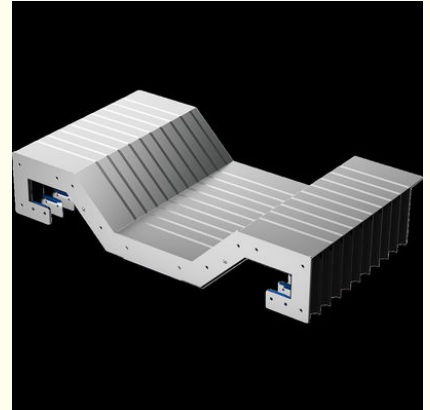


## Professional Made Telescopic Cover For Cnc Machines Protection Sliding Bellow Cover

### Our Product Introduction

#### Basic Information

- Place of Origin: China
- Brand Name: BNEE
- Certification: ISO9000 CE
- Model Number: Customised as per drawing
- Minimum Order Quantity: 1
- Price: 20\$-60\$
- Packaging Details: cardboard box
- Delivery Time: 5-8work days
- Payment Terms: T/T
- Supply Ability: 100 pieces per week



#### Product Specification

- Highlight: Professional telescopic steel way covers,  
Sliding telescopic cover for cnc machines,  
Sliding Bellow Cover

## Product Description

### Guide Rail Protective Covers: The Essential Shield for Linear Motion Systems

**Introduction:** Guide rail protective covers are specialized protective devices designed to safeguard guide rails in linear motion systems. These covers are critical in maintaining the precision, performance, and longevity of machinery that relies on linear guides for accurate movement.

**Application Scope:** Guide rail protective covers are utilized across a broad spectrum of industries where linear motion is fundamental:

**Machine Tools:** They are extensively used in CNC machines, milling machines, and laser engraving equipment to protect guide rails from debris and wear.

**Automotive Industry:** In the production and assembly of automotive components, these covers shield guide rails from the harsh conditions of the manufacturing process.

**Aerospace and Defense:** High-precision equipment in these sectors benefits from the protection offered by guide rail covers to ensure consistent operation.

**Medical Equipment:** In machinery used for medical purposes, such as imaging and surgical devices, these covers protect guide rails from contamination.

**Industrial Automation:** Robotic systems and automated assembly lines rely on guide rail covers to maintain the integrity and precision of linear motion components.

**Usage Environments:** Guide rail protective covers are engineered to operate effectively in a variety of environments:

**Industrial Workshops:** They are designed for use in standard workshop conditions, protecting guide rails from the typical wear and tear of industrial machinery.

**Outdoor and Semi-Outdoor Settings:** For machinery that operates in outdoor or semi-outdoor environments, these covers provide protection against weather elements and environmental debris.

**High-Humidity Conditions:** Special materials are used in the construction of covers for use in environments with high humidity or where water and coolants are frequently used.

**Chemical Exposure:** In industries where machinery may be exposed to corrosive chemicals, guide rail covers are made from materials that resist chemical degradation.

**High-Traffic Areas:** In facilities with heavy foot or vehicle traffic, these covers protect guide rails from accidental impacts and abrasion.

**Performance Characteristics:** The performance of guide rail protective covers is characterized by several key features:

**Durability:** Made from strong materials such as steel, aluminum, or reinforced plastics, these covers are built to withstand the test of time.

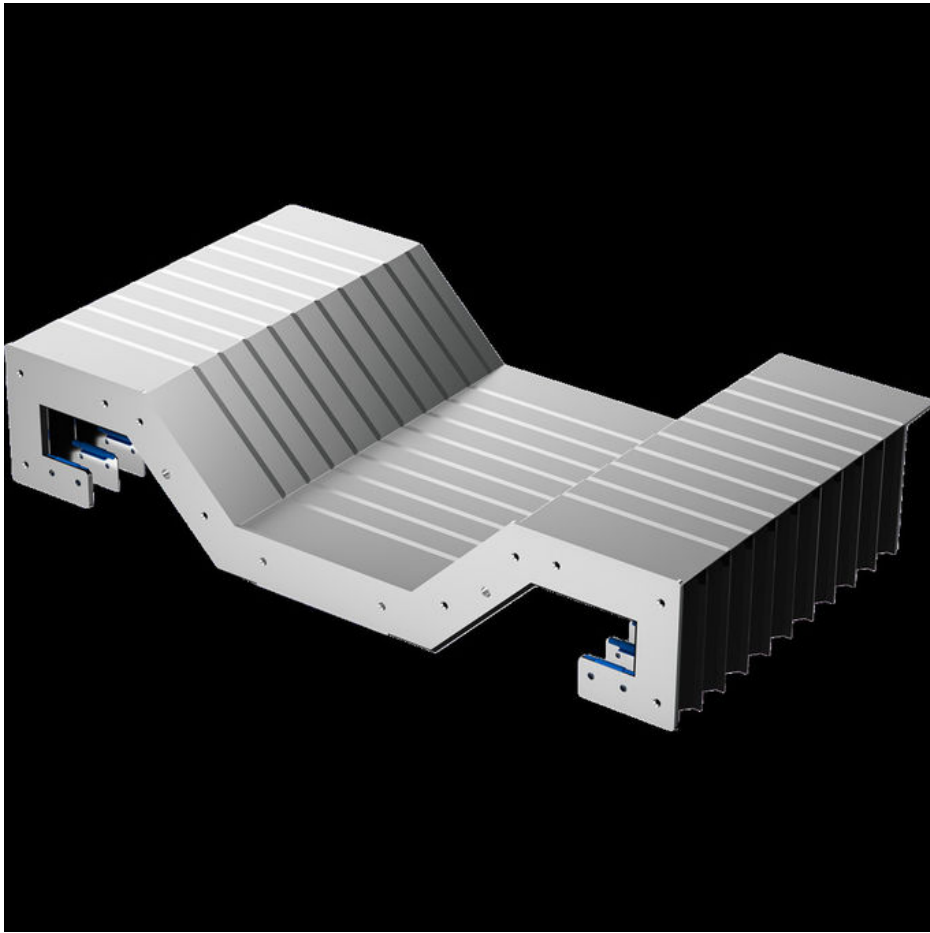
**Sealing Properties:** They offer an effective seal to prevent contaminants from reaching the guide rails, thus reducing maintenance requirements and prolonging the life of the rails.

**Flexibility:** Some guide rail covers are designed with a flexible construction that allows for movement and vibration without compromising protection.

**Ease of Installation:** Many covers are designed for quick and easy installation, with features such as snap-on fittings or adjustable lengths.

**Customizability:** Guide rail protective covers can be customized to fit the specific dimensions and requirements of different machinery and applications, including shape, size, and material.

**Conclusion:** Guide rail protective covers play a vital role in preserving the functionality and accuracy of linear motion systems. Their ability to protect guide rails from a variety of environmental factors, along with their durability and customizability, makes them an indispensable component in any industry that depends on precise linear movement. As technology advances and the demand for precision increases, the importance of reliable protective solutions like guide rail protective covers will continue to grow.







**BNEE®** Hebei Zhuolian Machine Tool Accessories Co., Ltd.



+8613463173251



BNEE@hebeizhuolian.com



flexiblecablecarrier.com

Cangdong Economic Development Zone, Cangzhou City, Hebei Province